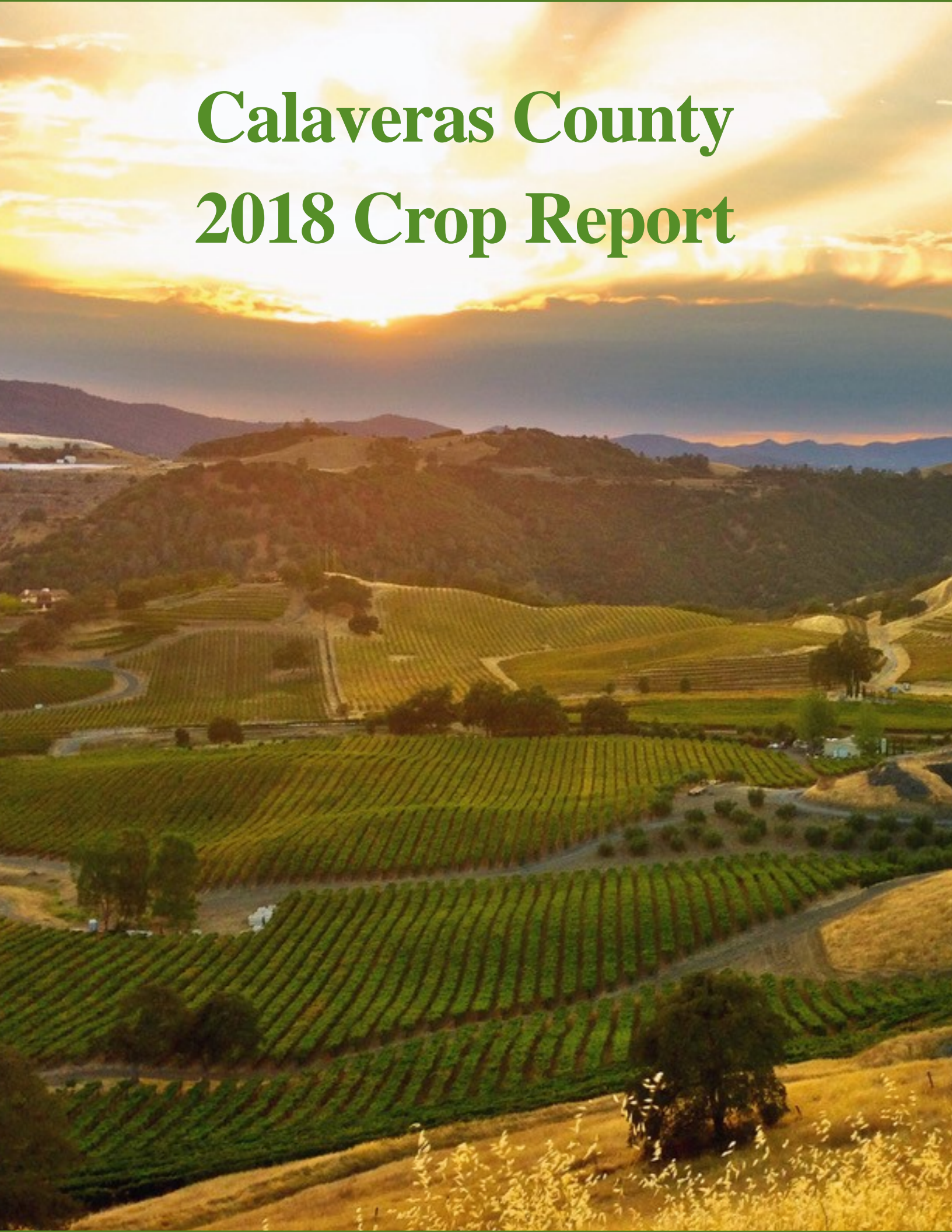


Calaveras County 2018 Crop Report





Calaveras County

Department of Agriculture

Kevin Wright ♦ Agricultural Commissioner / Director of Weights and Measures

Karen Ross, Secretary
California Department of Food and Agriculture
and
The Honorable Board of Supervisors
County of Calaveras

It is my privilege to present the 2018 Calaveras County Crop report as prepared pursuant to Section 2279 of the California Food and Agricultural Code.

Timber and Cattle were the leading commodities. Timber notched another increase in value, up 22 percent to slightly under 9 million dollars despite a decrease in quantity. The demand for quality green logs was good, beetle damaged logs played less of a factor and fire damaged timber was no longer marketable. Cattle and calves, the bedrock of Calaveras agriculture, also rose. Prices fell slightly, but rangeland forage was excellent as the effects of the drought faded.

Overall wine values rose 14%. Grape yields and utilization of grapes by wineries improved. Price per ton rose.

Poultry prices remained low on the national level but specialty growers enjoyed good demand for their free range or organic chicken in Bay area markets.

Walnuts growers continued to contend with even lower prices due to trading conflicts and issues in the export markets.

Olive yield fell dramatically in active orchards and our small growers relied on previous year's production to continue their retail trade.

Local beekeepers were unable to take full advantage of the ever increasing demand for pollination services in the valley's almonds due to a decline in viable hives.

Overall, agricultural production in the county rose to 29 million dollars, with cattle and timber, our two largest commodities leading the way.

I would like to extend my gratitude to the producers who provide data to help us compile a meaningful report. Numbers do not adequately represent the effort that it takes to grow and market an agricultural commodity in Calaveras County. Finally, I would like to thank the staff at the Department of Agriculture for their help in compiling this report and who do the wide variety of tasks necessary to fulfill our mandates, serve the county's varied agricultural interests, and represent the Commissioner's office in a thoughtful and professional manner.

Respectfully submitted,

A handwritten signature in black ink that reads "K. Wright".

Kevin Wright
Agricultural Commissioner

Presented by Calaveras County Department of Agriculture

Board of Supervisors

Gary Tofanelli	District 1
Jack Garamendi, Chair	District 2
Merita Callaway	District 3
Dennis Mills	District 4
Ben Stopper	District 5

Kevin Wright
Agricultural Commissioner

Catherine Talbot
Agricultural Biologist III

Justice Rasmussen
Agricultural Biologist II

Shawn Zmak Kuntz
Administrative Services Officer II

Steve Farris
Agricultural Technician III

Cover photo: 2018 was a good year for Calaveras wines. Pictured is Aloria Vineyard in Murphys. Because of our variety of microclimates, more than three dozen varieties of wine grapes can be grown in Calaveras County. Calaveras is a perfect growing region for hearty Spanish and Italian varietals like Barbera, Tempranillo, Mourvedre, Nebbiolo, Grenache, Graciano, Toringa, Albarino, Marsanne, Verdelho and Symphony as well as old vine Zinfandels, hearty and robust Cabernet and Petite Sirah.

Calaveras County Statistics

Total Land Area	662,791 Acres
Rangeland	198,000 Acres
Government Land	105,311 Acres
Water	16,300 Acres
Farms in County	663
All Farm Land	212,140 Acres
Irrigated Pasture	2,000 Acres
Land in Agricultural Preserves	143,000 Acres
Land in Timber Preserves	77,500 Acres



Cattle grazing provides the added benefit of reducing the fuel load and maintaining open space to reduce fire hazard in Calaveras County.

Leading Farm Commodities

Timber	\$8,948,100	Nursery Products	\$265,000
Cattle and Calves	\$7,852,537	Misc. Livestock	\$242,000
Wine Grapes	\$3,389,750	Almonds	\$240,000
Poultry	\$3,338,100	Apiary	\$230,000
Walnuts	\$1,346,624		



Dave and Toni Ann Fischer's goats take a break from work at the Angel Camp spray field. The goats are employed at the waste-water spray field to trim noxious weeds. Goats have become more popular than sheep in the county.

Livestock and Poultry

Item	Year	Number of Head	Live Weight	\$/ CWT	Gross Value
Cattle & Calves	2018	9,400	64,897	121	\$7,852,537
	2017	8,300	52,705	137	\$7,220,500
Poultry*	2018				\$3,381,100
	2017				\$3,890,000
Sheep & Lambs	2018	450	495	150	\$74,250
	2017	500	600	160	\$96,000
Misc**	2018				\$242,000
	2017				\$195,000
Totals	2018				\$11,549,887
	2017				\$11,401,500

*includes chickens, turkeys, game birds etc.

**includes goats, llamas, emus, fish etc.

Livestock and Poultry Products

Item	Year	Total
Livestock & Poultry Products*	2018	\$30,000
	2017	\$40,000

* includes wool, mohair, eggs etc.

Field Crops

Item	Year	Acres	Yield	total amt	value/unit	total value
forage/hay	2018	227	1.6T	363	116	\$42,100
	2017	200	1.8T	360	150	\$54,000
Pasture	2018	2,000		acre	125	\$250,000
	2017	2,000			150	\$300,000
Rangeland	2018	197,805		acre	17	\$3,362,685
	2017	197,805			19	\$3,758,300
Misc	2018					\$45,000
	2017					\$50,000
Total	2018					\$3,699,785
	2017					\$4,162,300



Ample and timely rains in Calaveras County helped to produce quality grass in late winter and spring in 2018, and support rapid weight gain for Calaveras Calves. See pasture on back cover for example.

Vegetable Crops

CROP	YEAR	TOTAL
VEGETABLE CROPS	2018	\$163,000
	2017	\$193,000



Simone Hickman and William French grow what they sell at the Certified Farmers Market in Angels Camp, the longest running market in the county. The market is a social event, and customers also enjoy food and a live band besides picking up their fresh produce.

Fruit and Nut Crops

CROP	YEAR	ACRES	TONS/ACRE	TOTAL TON	PRICE/TON	TOTAL
WINE GRAPES*	2018	711	3.2	2275	1490	\$3,389,750
	2017	683		2014	1476	\$2,972,700
WALNUTS	2018	794	1.06	841.64	1600	\$1,346,624
Walnuts non bear- ing****	2018	65	0	0	0	\$ 0
Walnuts	2017	794	1.14	905	2280	\$2,063,400
Almonds	2018	50	0.91	45.5	4800	\$ 218,400
Almonds non bearing	2018	130	0	0	0	\$ 0
Almonds	2017	50	0.1	5	4600	\$ 20,900
OLIVES**	2018	65	0.1	6.5	632	\$ 2,054
	2017	65	1.5	65	632	\$ 61,600
MISC***	2018					\$ 85,000
	2017					\$ 153,000
Total	2018					\$5,041,828
Total	2017					\$5,271,600

*includes 522 acres of red and 189 acres white wines.

**includes fresh and oil, adjusted acreage to exclude non producing and non commercial orchards

***includes apples, berries, cherries, peaches, pears, pistachios, various nuts

Apiary Products

ITEM	YEAR	TOTAL
APIARY	2018	\$230,000
	2017	\$316,000



Beekeepers reported a shortage of bees due to hive decline but Sean Krietch bravely shows off a full frame of healthy and happy bees.

Nursery Crops

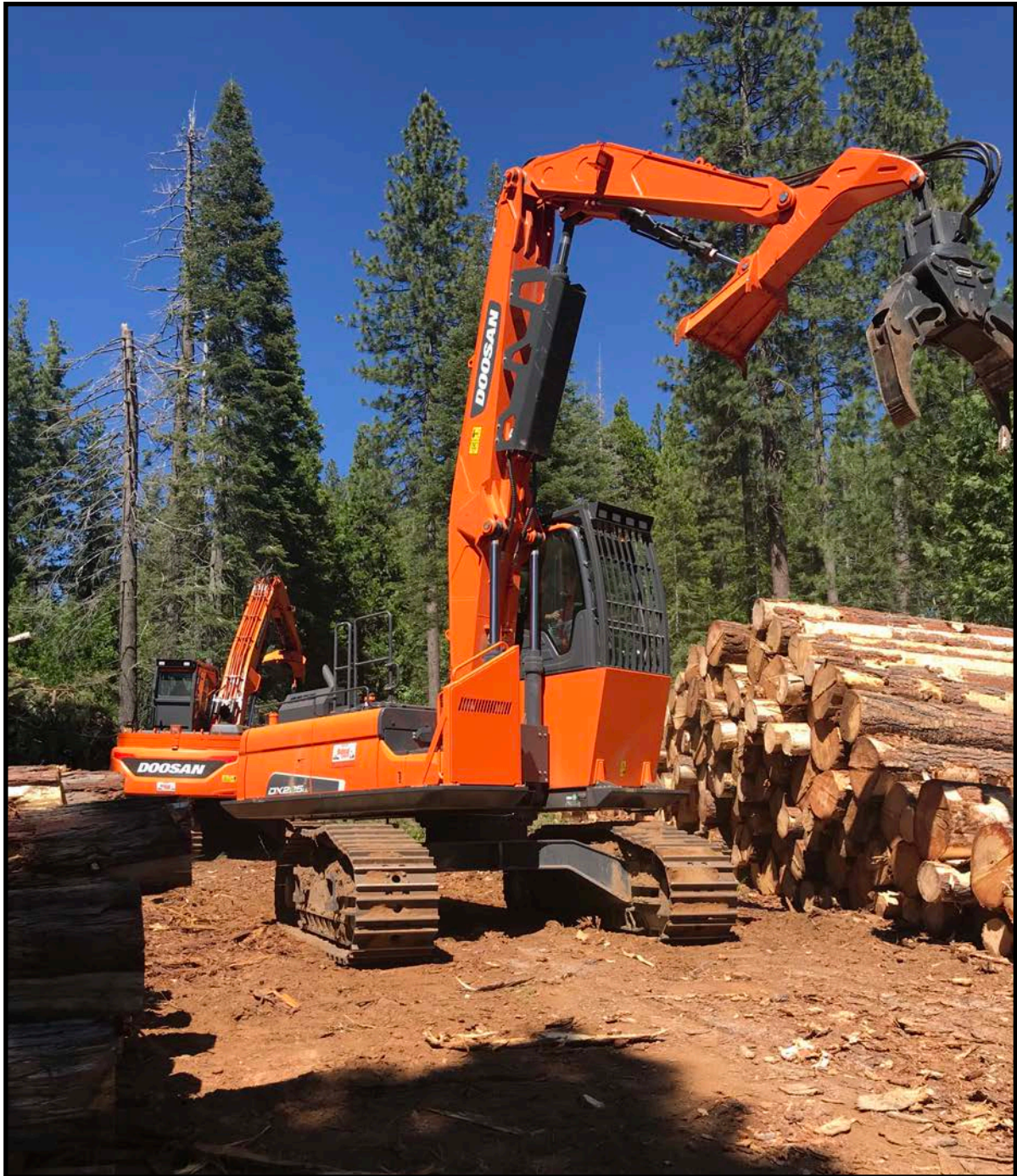
Christmas Trees	2018	\$11,000
	2017	\$8,500
Nursery Products	2018	\$263,000
	2017	\$250,000



Farm Advisor Lynn Wunderlich stops to check out the beautiful flower baskets at Hilltop Nursery in San Andreas. The flowers are grown and arranged by the family run business.

Timber

	Year	mbf	value
Timber	2018	38,096	\$8,948,080
Production	2017	52,933	\$7,333,971



Timber was the number one crop in Calaveras County in 2018. Quality timber harvesting returned to Calaveras with a good market. Crews also worked on fire breaks, and those sellable logs were utilized

Comparative Production Values

ITEM	2016	2017	2018
LIVESTOCK & POULTRY	\$10,465,210	\$11,401,500	\$11,549,887
LIVESTOCK AND POULTRY PRODUCTS	\$38,000	\$40,000	\$30,000
FIELD CROPS/RENT	\$4,366,100	\$4,162,300	\$4,055,400
VEGETABLE CROPS	\$165,000	\$193,000	\$163,000
FRUIT AND NUT CROPS	\$4,906,328	\$5,271,600	\$5,041,828
APIARY PRODUCTS	\$235,000	\$316,000	\$230,000
NURSERY PRODUCTS	\$162,000	\$250,000	\$263,000
TIMBER	\$4,802,011	\$7,333,400	\$8,948,080
TOTAL	\$25,139,649	\$28,967,800	\$30,281,195

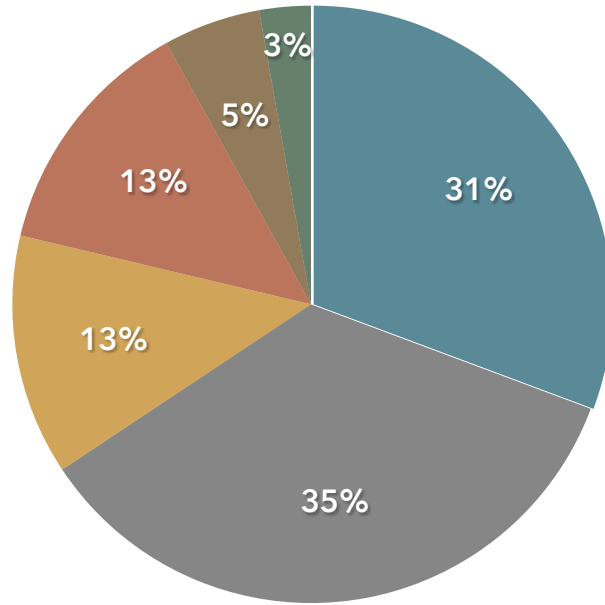


Value of our agricultural commodities cannot be measured by gross production value alone, as our wineries and tasting rooms provide added value to our grape yields, and our rangeland and forests invite visitors from around the state to enjoy the fruits and open space of Calaveras County.

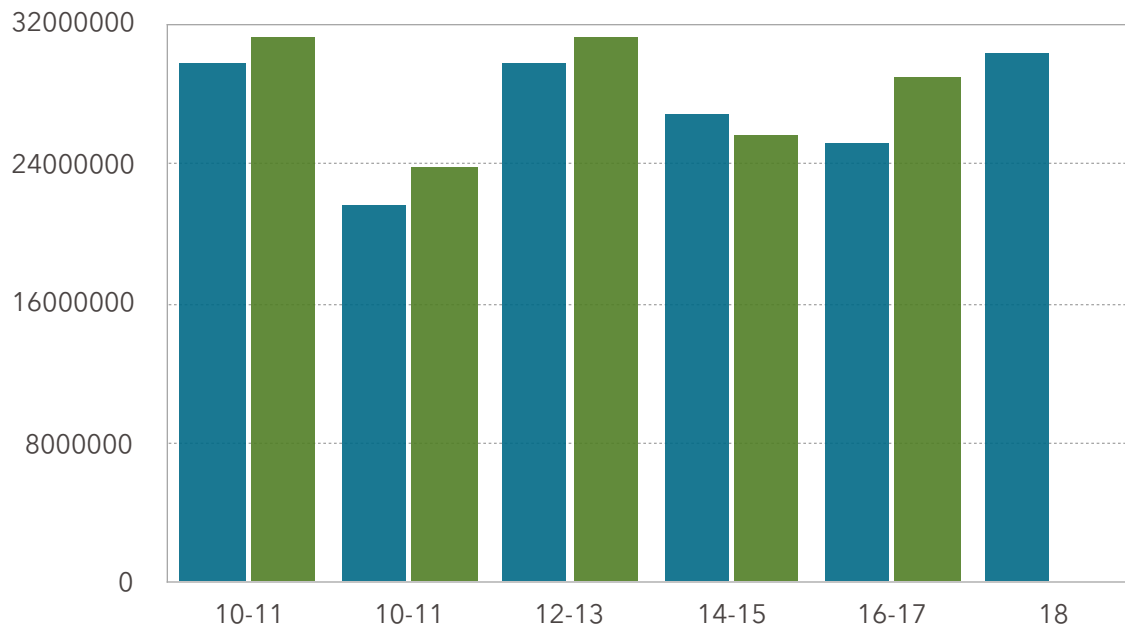
2018 Agricultural Production Summary

Cattle and timber provide for over half of all agricultural production in Calaveras County. In 2018, an increase in the value of harvested timber and modest increases in cattle production and wine grapes led to an overall increase in the value of agriculture production value in the county.

- Cattle and calves
- Timber
- Poultry
- Wine Grapes
- Walnuts
- all other



Ten Year Agricultural Production History





Calaveras County Ag Department, with funding from California Department of Food and Agriculture, conducts a Trapping Program for the early detection of invasive insects. Here Commissioner Kevin Wright, Ag Biologist Catherine Talbot and Ag Technician Jennifer Neves consult with Dr. Larry Allen, retired entomologist and Calaveras County resident, about a suspected olive orchard pest. The Department provides a wide range of services to the community including pesticide safety enforcement, noxious weed control, invasive insect detection, commercial weighing and measuring device testing, petroleum inspections, wildlife management oversight, Williamson Act administration, Certified Farmers Market inspections, agricultural shipment inspections for pest exclusion, and agricultural data reports, such as this crop report. The Commissioner also provides recommendations to the county administration on a variety of agricultural issues.

Acknowledgements and Credit

photo credits:

Aloria Vineyard, front cover, Joel Metzger

Cattle grazing, page 4, Catherine Talbot

Goats, page 5, Toni Ann Fischer

Heifers at fairgrounds, page 7, Mindy Rasmussen

French Family Fruit Stand, page 8, Catherine Talbot

Sean Kriletich, Bees, Page 10, Peter Rogmark

Hilltop Nursery, page 11, Catherine Talbot

Fire break logging, page 12, Steve Kafka

Wine tasting , page 13, Scot Nieman Photography

Horse in pasture, back cover, Rebecca Fischer

layout, design and narration

Kevin Wright

agricultural production data

thanks to the many people who submitted their production reports to the Department of Agriculture and who took the time to talk with the Commissioner and staff.

